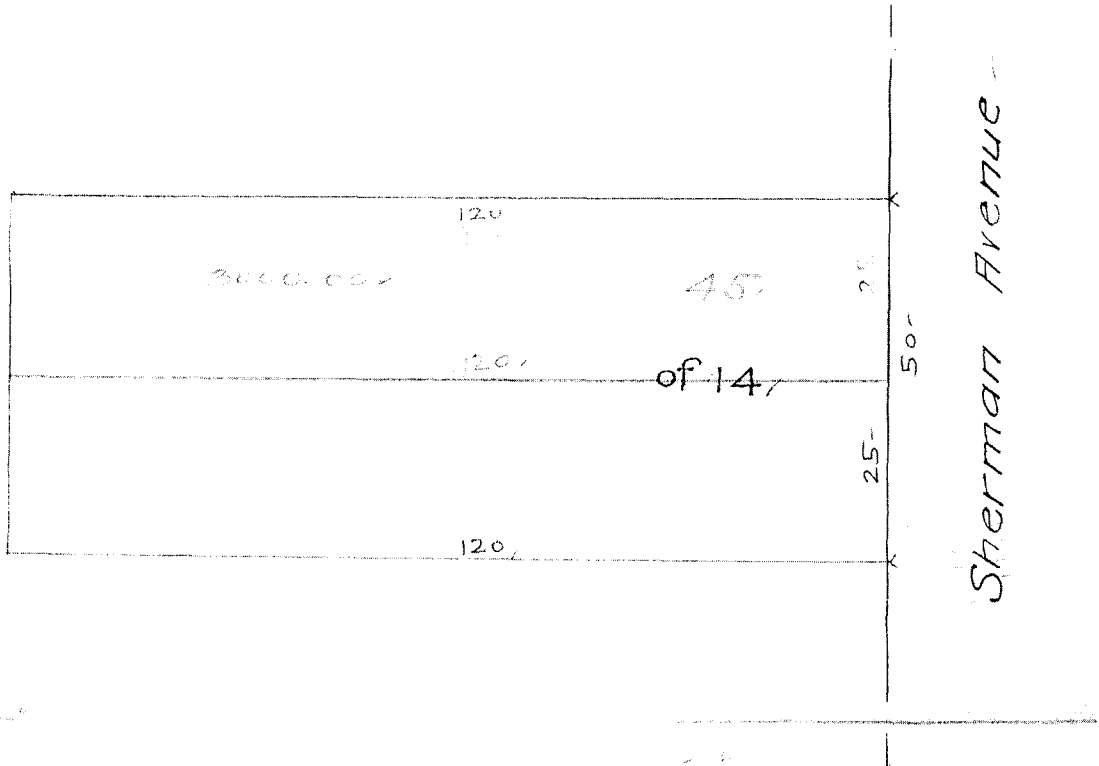


16/3
2252
100-100-100

Pleasant Plains and Mount Pleasant,
Block 14

NOTICE: In case of trust, the fact must be stated in affidavit, and assent of trustees must be given.



I hereby subdivide the North 25 ft. of lot 14 (of subdivision by Todd et al., recorded in Book 20, No. 2, page 24), Block 14, Pleasant Plains and Mount Pleasant, less the portion taken for widening of Sherman Avenue, as shown above in black, into 2 lots, as shown above in red, and request that the subdivision be approved by the Commissioners of the District of Columbia and recorded in the office of the Surveyor of said District.

I do not own any part of lots 14 not covered by this proposed subdivision.

Witnesses { *James D. ...* } *...* [SEAL]

Witnesses { *J. ...* } *...* [SEAL]

Office of the Surveyor of the District of Columbia,

Washington, June 6th 1902

I certify that the above subdivision, as shown in red, is correct, and I respectfully recommend the approval and admission to record in this office of the same.

Henry P. Looker, Surveyor, D. C. [SEAL]

Ordered: The subdivision shown above by red lines is hereby approved, and the Surveyor is directed to record the same in his office.

Date *June 11* 1902

Scale: 1 in. = 20 ft.

D. C.

...
...
...
Board of Zoning Adjustment
District of Columbia
CASE NO. 19127
EXHIBIT NO. 39D